

# American Outsole Stitching Machine, Model A (AOS-A)

---



- ▶ **High speed, quiet, smooth operation**
  - ▶ **Reliable, low maintenance profile**
  - ▶ **Versatile, excellent quality performance**
  - ▶ **Adjustable stitching head height**
- 

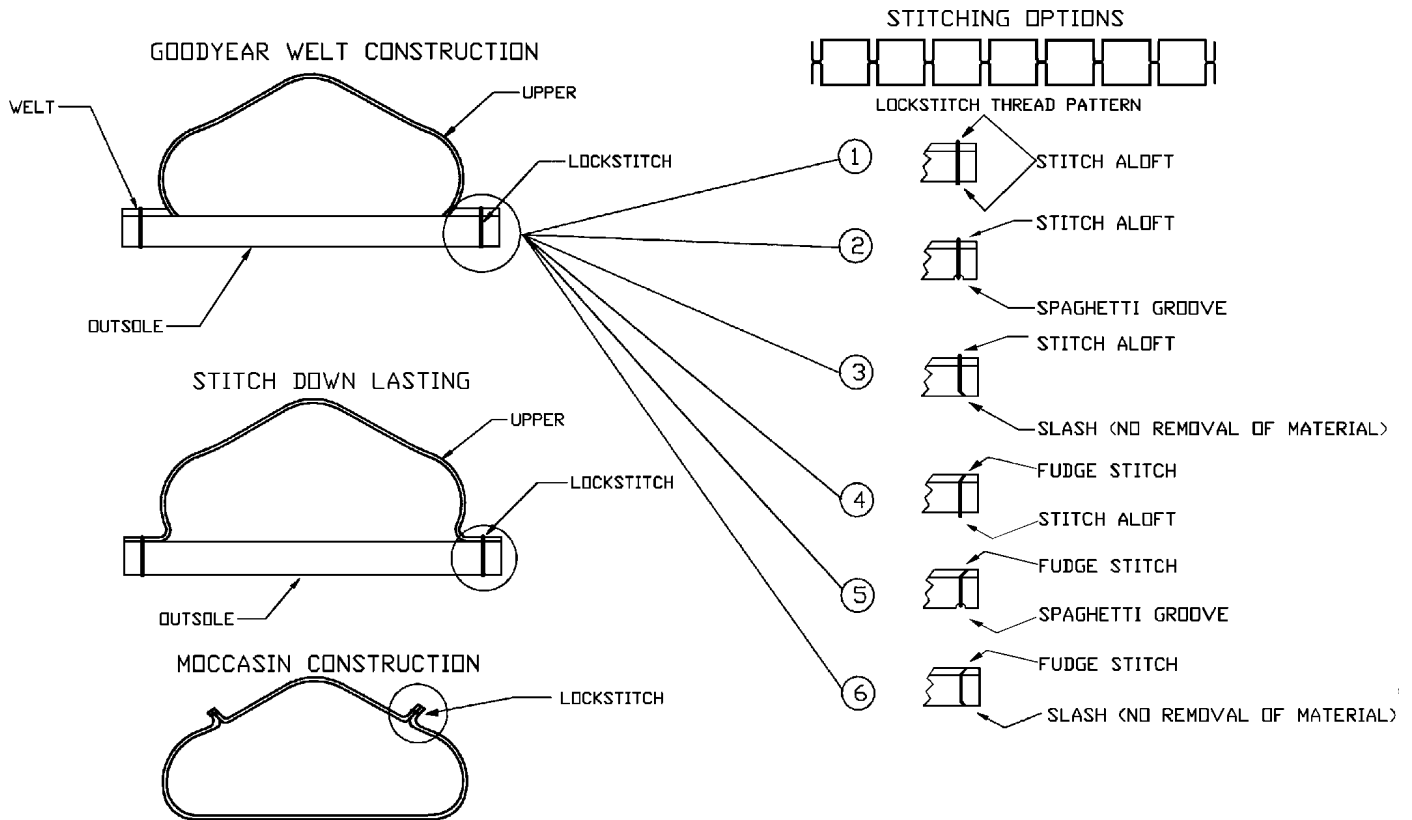
---

The results of many years experience have been combined to develop this awl-fed stitching machine which offers the capability to produce a wide variety of quality stitching. These include Stitch Aloft, Spaghetti Groove, Slashing Groove, Fudge Stitching, Stitchdown (flexible) Stitching, Bond Welt Stitching with welt application and Moccasin Stitching.

Features of the machine include automatic lubrication with fail-safe shutdown, positive automatic lock adjustment extremely accurate heat controls and tension control of thread distribution.

# AOS-A

## Stitch Variations:



## Specifications:

### Production:

up to 800 pairs per day depending on construction, size and style

### Dimensions:

**Width:** 36" (914 mm)  
**Depth:** 27" (686 mm)  
**Height:** 58" (1473 mm)  
**Packed**

**Domestic:** 111 cu. ft. (3.14 m<sup>3</sup>)  
**Export:** 87 cu. ft. (2.45 m<sup>3</sup>)

### Weight:

**Gross:** 1000 lbs. (455 kg)  
**Net:** 875 lbs. (398 kg)  
**Exp Packed:** 1200 lbs. (546 kg)

### Electrical Specifications:

**220 Volts, 3 Phase, 60 Cycle (15 Amps)**  
*other electrical specifications available upon request*

### Pneumatic Specifications:

**.25 CFM at 80 pounds per square inch**  
**(7 liters per minute at 5.5 Atmosphere)**

**American & Schoen**  
**MACHINERY COMPANY**  
*a subsidiary of Schoen+Sandt Maschinenbau GmbH*